

ActiveCare
drive
 COBALT

NEW!



Available
1 Pack

Cobalt

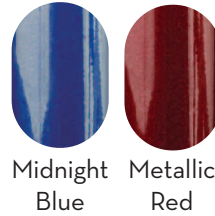
Power Wheelchair

COBALTBL16FS
 COBALT RD16FS

16", Folding Seat, Midnight Blue, 1/cs
 16", Folding Seat, Metallic Red, 1/cs



**EASILY
 DISASSEMBLES
 FOR TRANSPORT**



Midnight Blue Metallic Red



FEATURES:

- Full-size performance in a lightweight, easily transportable power wheelchair.
- Can be disassembled quickly and easily with the pull of a quick release lever.
- Seats swivel and feature a fold-down backrest
- Seat has four height adjustments, from 20" to 23".
- Padded, flip-up armrests allow for easy transfers and user access. Armrests are also removable and height and width adjustable for positioning, support and adaptability to the size of the user.
- Adjustable length controller mount can be affixed to either the left or right armrest and can be fitted with an optional swing-away arm for additional flexibility.
- Standard footplate can be flipped up out of the user's way and adjusted in both height and angle.
- Chair can be fitted with optional elevating legrests allowing the user to travel comfortably with raised legs—a necessity for those with some medical conditions, such as edema.
- Standard positioning belt for added user security.
- Armrest-mounted reflectors increase the chair's visibility.
- Programmable controller with common connectors is easy to service and setup and can be personalized for individuals with special requirements.
- Flat-free, non-marking tires offer worry free travel.
- Motor assemblies offer easy freewheel operation, allowing the chair to be pushed, which can be helpful for transport.
- 250 lbs. Weight Capacity

Important Notice: Item numbers that display an asterisk () reflect an item that will be discontinued or package change.